

Build a Beetle

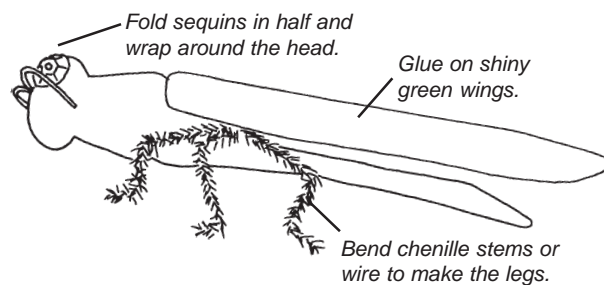
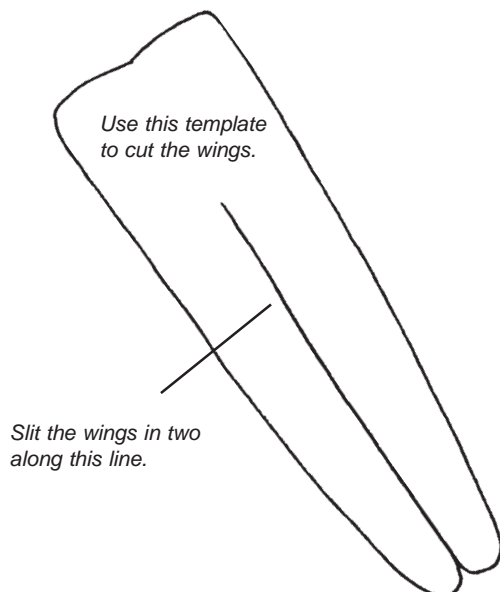
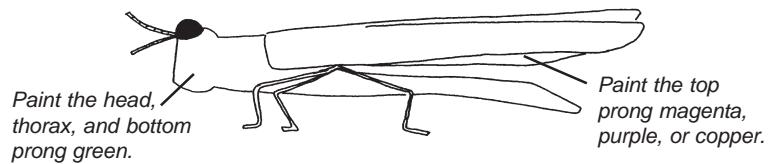
Be on the lookout for invasive emerald ash borers (EABs). EABs have killed millions of ash trees and may be on their way to Wisconsin! After you make one of these models, you'll remember what they look like.

Here's what you'll need!

- 1 non-spring type clothespin
- Green paint or marker (Green metallic paint looks really good!)
- Purple, magenta, or copper paint or marker (optional)
- 1 chenille stem or wire, 12 inches long (Green metallic is best.)
- 1 piece of paper about 1 1/4" X 4" (Try to find something that is green metallic. Look around for green foil wrapping paper, green foil from the inside of a fancy greeting card envelope, or a piece of green Mylar from a helium balloon.)
- 2 eyes (Use black half-round beads, black sequins, or wiggly eyes)
- 2 antennae (Use floral wire, telephone wire, or stiff string.)
- drill and small drill bit (optional)
- paintbrush
- wire cutter
- pencil
- scissors
- tacky glue
- toothpick

Here's what you do!

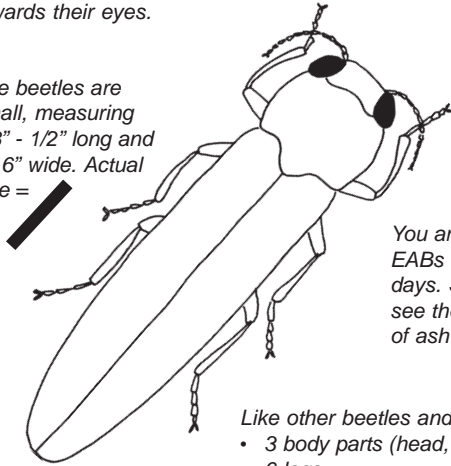
1. If you are using wire for antennae, drill a small hole in the front of the clothespin. Don't put the antennae in yet.
2. Paint or color the front and bottom of the clothespin green. Paint or color the top prong of the clothespin purple, magenta, or copper. Allow to dry.
3. Cut the chenille stem into three pieces with a wire cutter. Bend each piece in half and fold to make the legs. Twist the legs together to secure and slide them onto the clothespin.
4. Use the template to cut out wings. Glue into place, green side up, with tacky glue.
5. Glue on eyes and antennae (a toothpick may help).



The emerald ash borer belongs to a group of insects known as metallic wood-boring beetles (Buprestidae). EABs start life as tiny eggs. The larvae that hatch out are creamy white with flattened brown heads. When mature, they are just over one inch and have a pair of brown pinchers at the tip. The pupae are about one-half inch long and cream-colored. Adult EABs are a stunning, but menacing, metallic green!

EABs have flattened heads. Their black compound eyes cover much of their heads. Their short antennae come out from their faces and curve back towards their eyes.

The beetles are small, measuring 3/8" - 1/2" long and 1/16" wide. Actual size =

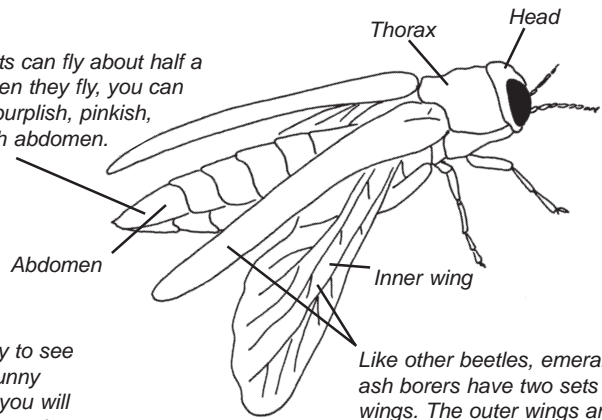


You are most likely to see EABs on warm, sunny days. Sometimes you will see them eating the edges of ash leaves.

Like other beetles and most insects, EABs have:

- 3 body parts (head, thorax, abdomen)
- 6 legs
- 2 pairs of wings
- 2 antennae
- 2 compound eyes

The adults can fly about half a mile. When they fly, you can see the purplish, pinkish, copperish abdomen.



Like other beetles, emerald ash borers have two sets of wings. The outer wings are hard; the inner wings are soft and see-through.



When disturbed, EABs will fold up their legs, "pretend" to be dead, and drop to the ground.